



**DATA BRIDGE**  
DYNAMIC

Databridge Dynamic Private Limited  
414/A, Orion Business Park  
Near Cinewonder Mall  
Thane (W) 400607  
India  
info@databridgedynamic.com



# 6 & 10 PORT

# INDUSTRIAL MANAGED SWITCH - GIGA

## DDSMG SERIES



## SYNOPSIS

- DDSMG 6 AND 10 PORT SERIES INDUSTRIAL L2 MANAGED SWITCH ADOPT STORE-AND-FORWARD ARCHITECTURE, FAN-LESS AND ENERGY-SAVING DESIGN TO PROVIDE RELIABLE AND STABLE OPERATION IN HARSH INDUSTRIAL ENVIRONMENTS.
- ALL THE SWITCHES SUPPORT 12-58VDC DUAL POWER INPUT AND OPERATE AT TEMPERATURE OF -40 TO 85°C.
- WHILE USING STANDARD CAT5 / 5E / 6 CABLES THAT CARRY ETHERNET DATA, THE SWITCH CAN ALSO PROVIDE POWER TO A POWERED DEVICES, SUCH AS VOIP PHONES, VIDEO CAMERAS, WIRELESS ACCESS POINTS, ALARMS, TRAFFIC CONTROLLERS, SENSORS AND TRACKING DEVICES.

## FEATURES & BENEFITS

- ERPS (G.8032) RING TECHNOLOGY
- LOOP PROTECTION
- SFP FIBER PORT SUPPORT 1.25G/155M
- 9.6K JUMBO FRAME
- 48-58V DC DUAL POWER INPUT WITH POLARITY REVERSE PROTECTION
- 6KV SURGE PROTECTION FOR POWER AND COPPER PORT
- 8-15KV ESD PROTECTION
- IP40 ENCLOSURE
- DIN-RAIL INSTALLATION, WALL-MOUNTED OPTIONAL
- LOW POWER CONSUMPTION, LEAD-FREE PROCESS

## SPECIFICATIONS

### PERFORMANCE

Model	10 Port, 8Copper 2 SFP	6 Port, 4Copper 2 SFP
Standard	IEEE802.3, IEEE802.3u, IEEE802.3ab, IEEE802.3z IEEE802.3x, IEEE802.1Q, IEEE802.1w IEEE802.1s, IEEE802.1d, IEEE802.1ag	
Mode	Store and Forward / Cut through or fragment free switching	
Protocols	TCP, UDP, ARP, ICMP, ICMP Router Discovery	
Switching Capacity	55Gbps Non-blocking	
Packet Forwarding Rate	14.88Mbps	8.93Mbps
MAC Address	8K	
Buffer Space	4M	

<b>Jumbo Frame</b>	9.6K
--------------------	------

**INTERFACE**

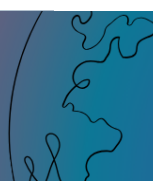
<b>Copper Port</b>	10 / 100 / 1000M Auto-negotiation, RJ45 Auto-Cross for MDI/MDIX Cat5 / Cat5e / Cat6, ≤100m
<b>Fiber Port</b>	2 * 1.25G/155M SFP slot type TX Power & RX Sensitivity based on SFP Modules
<b>Console</b>	RS232 (RJ45)
<b>Reset</b>	Key switch
<b>Power Port</b>	Terminal Block
<b>LED indicators</b>	PWR, RUN, Speed, Link/Act
<b>Alarm Relay</b>	Normal Open

**POWER**

<b>Input Voltage</b>	12-58VDC Dual Redundant 6-PIN Removable Terminal Block Overload Voltage protection Overload Current protection Reverse Polarity protection	
<b>Input Current</b>	Max.0.35A @ 24V DC	Max 0.25A @ 24V DC
<b>Power Consumption Full load</b>	8.5W	6W

**PHYSICAL CHARACTERISTICS**

<b>Dimension</b>	138x107x56mm
<b>Enclosure</b>	IP40, Aluminum Alloy, Fan-less
<b>Installation</b>	DIN-rail, Wall-mounted
<b>Weight</b>	540g



**ENVIRONMENT**

<b>Working Temperature</b>	-40°C to +85°C
<b>Storage Temperature</b>	-40°C to +85°C
<b>Relative Humidity</b>	5-95% (no condensation)

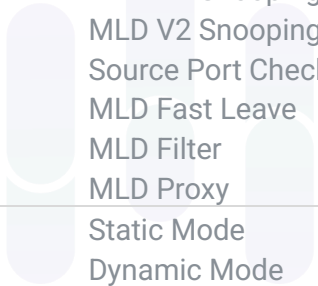
**SOFTWARE FEATURES**

**L2 FEATURES**

<b>Port Features</b>	IEEE 802.3x Flow control Interface counters Broadcast Storm Control Isolated Ports Flow Mirroring
<b>Link Aggregation</b>	Static Aggregation IEEE802.1q Dynamic Aggregation, LACP
<b>MAC-address table</b>	Static MAC-address Dynamic MAC-address Security MAC-address IVL mode
<b>Mirror</b>	Port-based Mirror VLAN-Based Flow-Based
<b>Spanning Tree</b>	IEEE802.1d STP IEEE802.1w RSTP IEEE802.1s MSTP
<b>GVRP</b>	Supported
<b>QINQ</b>	VLAN-based QinQ 1:1 VLAN Mapping
<b>LLDP</b>	LLDP LLDP-MED
<b>Loop Protection</b>	Supported
<b>ERPS (G.8032)</b>	Single Ring, Sub-Ring, Multi-Ring Load balance Recovery Time < 50ms
<b>VLAN</b>	4094 VLAN Port-based VLAN GVRP



<b>Protocol VLAN</b>	MAC-based VLAN Protocol-based VLAN IP Subnet-based VLAN
<b>Voice VLAN</b>	Static entry LLDP-MED
<b>Private VLAN</b>	Supported
<b>BPDU Filtering</b>	Per Port
<b>Host ARP table</b>	Yes
<b>Port Isolation</b>	Supported
<b>IGMP Snooping</b>	IGMP V1 Snooping IGMP V2 Snooping IGMP V3 Snooping Source Port Check IGMP Fast Leave IGMP Filter IGMP Proxy
<b>MLD Snooping</b>	MLD V1 Snooping MLD V2 Snooping Source Port Check MLD Fast Leave MLD Filter MLD Proxy
<b>MVR</b>	Static Mode Dynamic Mode Fast Leave
<b>DATA BRIDGE</b>	
<b>SECURITY</b>	
<b>ACL</b>	ACL (IP Standard ACL), IPv4/IPv6 MAC extend ACL IP extend ACL L2, L3, L4 fields match log, redirection, mirroring, speed limit
<b>QoS</b>	QoS Class, Remarking SP, WRR queue scheduling Ingress port-based rate-limit Ingress priority-based rate-limit Egress port-based rate-limit Egress queue-based rate-limit Storm Control Policy-based QoS 8 queues per port
<b>Dot1x</b>	Port Access Control User Access Control



**DATA BRIDGE**

**SECURITY**

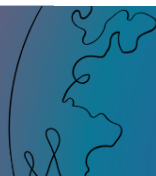
D Y N A M I C



	MAC-address Access Control RADIUS Server TACACS+ Server
<b>IP Source Guard</b>	Dynamic entry (from DHCP Snooping) Static entry
<b>ARP Inspection</b>	Dynamic entry (from DHCP Snooping) Static entry
<b>Port Security</b>	Supported
<b>Access Management</b>	Supported
<b>Access Control List (ACL)</b>	Port based, VLAN based, Bidirectional ACL
<b>Additional Features</b>	IP Binding per Port, Port trunking Static IEEE 802.1p QoS / CoS / ToS / DSCP priority queuing Port Mirroring, Auto sensing, Dynamic ARP Inspection ARP Snooping / Spoofing prevention, Loopback detection/ STP Loopback detection, Priority Mapping, DiffServ Marking BootDoS attack prevention, DHCP Server Screening, Head of Line(HoL), BootP, Digital Diagnostic Monitoring Interface (DDMI) support IEEE 802.1x Port Access Authentication, User authentication for Web GUI, Ingress policing, Auto QoS

**MANAGEMENT**

<b>User management</b>	Password protection
<b>SNMP</b>	SNMP V1/V2c/V3 (MIB)
<b>SNTP</b>	Yes
<b>Other</b>	SmartPort, Syslog, DHCP Server
<b>RMON</b>	Statistics Group History Group Alarm Group Events Group
<b>Web management</b>	WebUI with HTTP V1.1, HTTPS
<b>Firmware Upgrade</b>	Reversion Upgrade
<b>IPv4/IPv6</b>	Supported
<b>CLI</b>	Supported
<b>RADIUS client</b>	Supported
<b>Syslog/Debug</b>	Supported
<b>Diagnosis</b>	Ping (IPv4), ping (IPv6) Trace route(IPv4) Trace route(IPv6)



**APPLICATION**

<b>NTP</b>	NTP Client
<b>DHCP</b>	DHCPv4 Client, DHCPv6 Client
<b>DHCP Snooping</b>	DHCP snooping table Trust Port
<b>TELNET</b>	Telnet Server
<b>TFTP</b>	TFTP Client
<b>SSH</b>	SSH Server

**APPROVALS & STANDARDS TESTED FOR**

**ELECTRO MAGNETIC INTERFERENCE EMISSIONS : EN55032 : 2015**

<b>EN55022 / 55032: 2015</b>	Conducted Disturbance, Radiated Disturbance
<b>IEC 61000-3-2: 2014</b>	Harmonic Current Emissions
<b>IEC 61000-3-3: 2013</b>	Voltage Fluctuation & Flicker

**ELECTRO MAGNETIC IMMUNITY / SUSCEPTIBILITY: EN55024 / EN55035 : 2017**

<b>IEC 61000-4-2: 2009</b>	Electrostatic Discharge
<b>IEC 61000-4-3</b>	RF Immunity Continuous Radiated Disturbance
<b>IEC 61000-4-4</b>	Electrical Fast Transient
<b>IEC 61000-4-5</b>	Surge Immunity
<b>IEC 61000-4-6</b>	Conducted RF immunity Continuous Conducted Disturbance
<b>IEC 61000-4-8</b>	Power Frequency Magnetic Field
<b>IEC 61000-4-11</b>	AC Voltage Dips & Interruption/Variation

**OTHERS**

<b>EN 62368 / EN 60950</b>	Safety
<b>FCC 47 CFR Part 15B 15.107(a), 15,109(a)</b>	FCC



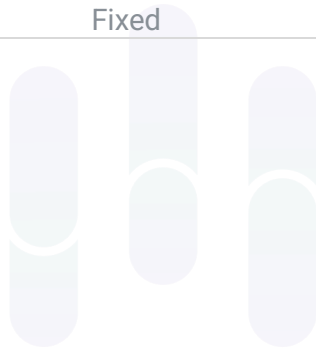
**ORDERING CODE**

**DDSMG 30X-2S A**

---

<b>DDSMG</b>	Industrial Grade Giga Managed Ethernet Switch	
<b>30X</b>	<b>304</b>	4 * 10/100/100 Copper Ports
	<b>308</b>	8 * 10/100/1000 Copper Ports
<b>2S</b>	2 * 100/1000 SFP Port	
<b>A</b>	Fixed	

---



**DATA BRIDGE**  
D Y N A M I C

